

WHEN RECORDED RETURN TO:
WHITE BEAR ANKELE TANAKA & WALDRON
2154 East Commons Avenue, Suite 2000
Centennial, CO 80122

Wildflower Metropolitan District Nos. 1-3
(Weld County, Colorado)

SPECIAL DISTRICT PUBLIC DISCLOSURE
Pursuant to § 32-1-104.8, C.R.S.

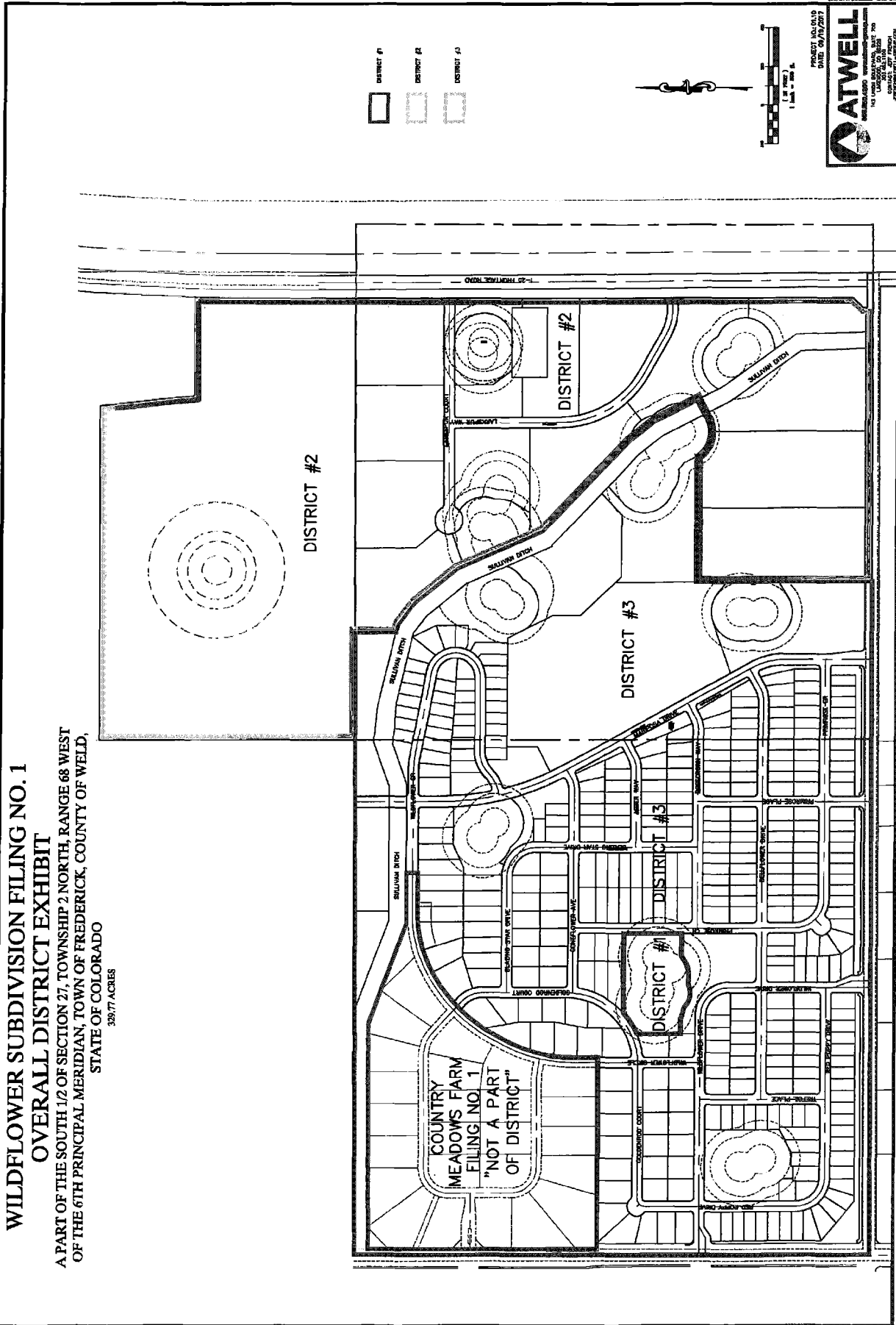
| | |
|-------------------------|--|
| Name of District: | Wildflower Metropolitan District Nos. 1-3 ("District") |
| Powers of the District: | All powers authorized in § 32-1-1004, C.R.S., including, but not limited to, mosquito control, parks or recreational facilities or programs, traffic and safety controls, sanitation services, street improvements, transportation, water services, and solid waste disposal, subject to the limitations contained in the District's Service Plan. |
| Service Plan: | The District's Service Plan, which can be amended from time to time, includes a description of the District's powers and authority. A copy of the District's Service Plan is available from the Division of Local Government. |
| | Wildflower Metropolitan District Nos. 1-3 is authorized by Title 32 of the Colorado Revised Statutes to use a number of methods to raise revenues for capital needs and general operations costs. These methods, subject to the limitations imposed by section 20 of Article X of the Colorado Constitution, include issuing debt, levying taxes, and imposing fees and charges. Information concerning directors, management, meetings, elections and current taxes are provided annually in the Notice to Electors described § 32-1-809(1), C.R.S., which can be found at the District office, on the District's web site, on file at the Division of Local Government in the State Department of Local Affairs, or on file at the office of the clerk and recorder of each county in which the special district is located. |
| District Boundaries: | A map of the District's boundaries is attached hereto as Exhibit A. Please note that the District's boundaries may change from time to time. Please contact the District for the latest information. |

EXHIBIT A
District Boundary Map

WILDFLOWER SUBDIVISION FILING NO. 1

OVERALL DISTRICT EXHIBIT

A PART OF THE SOUTH 1/2 OF SECTION 27, TOWNSHIP 2 NORTH, RANGE 68 WEST
OF THE 6TH PRINCIPAL MERIDIAN, TOWN OF FREDERICK, COUNTY OF WELD,
STATE OF COLORADO
339.77 ACRES



ATWELL
 PROJECT NO. 15119
 DATE: 02/27/2013
 1410 LARA DRIVE, SUITE 170
 BOULDER, CO 80502
 (303) 440-2200
 WWW.ATWELLINC.COM